



Olympic



The Olympic has become one of Origin's most sought-after ranges. The all-new 2019 Olympic range has been improved and refined – reducing energy consumption, increasing thermal efficiency, new materials and finishes options to make it even easier to personalise your design to suit your taste and achieve your dream pool house.

The 2019 Olympic range has four new customisable models to choose from.

They vary in size and incorporate different facilities to suit your requirements.

- Designed to meet Permitted Development criteria*
- More energy efficient – through improved levels of insulation
- A selection of green energy options- to further reduce energy consumption and protect the environment
- Configurable door and window layouts
- Choice of roof finishes: slate, clay tile or shingle
- Choices in exterior finish: brick, painted render, horizontal weatherboard, cedar or engineered timber
- Configurable extension modules. – looking for a little more space to entertain, train or relax
- Wellbeing options: spa, sauna, steam room, relaxation area, gym or bar



Olympic A Specification

The Olympic model A is the perfect choice for a garden of any size. This fully insulated building structure is finished in an engineered timber exterior. Designed and built to the highest standards this 9.5m long by 5m wide building houses a 7.5m by 3m heated mosaic tiled pool and incorporates the plant room and a changing room that comprises a wet room tiled shower with a glazed screen, W.C hand basin and seating bench. The internal finishes are light, contemporary and airy consisting of a painted plaster walls, tiled floors and a choice of natural or white wash timber roof design. The exterior can be finished in a wide range of colours or optional brick or painted render can be added. The glazed lantern and aluminium bi-fold doors make this a warm and welcoming environment even during the cold winter months. This indoor pool comes fully equipped with all the associated plant, filtration, heating, circulation equipment, associated dehumidification system and including an automatic deck mounted slatted pool cover in white.

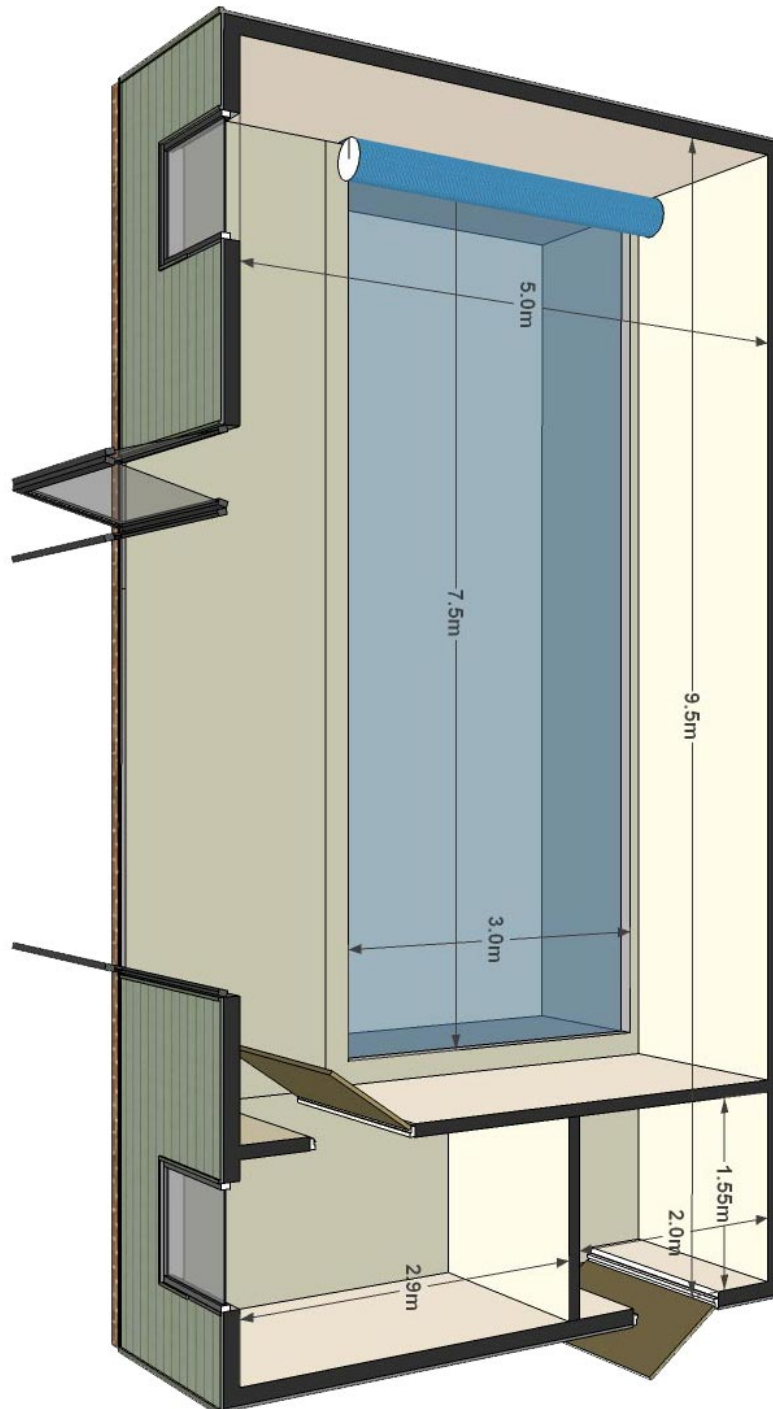
POOL FEATURES

- Heated pool with mosaic tile finish
- Changing room and WC
- Wet room tiled shower with glazed screen
- Internal plant room
- Air dehumidification unit
- Pool side relaxation space
- Contemporary light and airy interior design with tiled floors and white walls
- Natural timber roof design
- Choice of modern external colours
- State of the art filtration and circulation equipment
- Sustainable construction
- Bifold doors in Aluminium
- Automatic deck mounted slatted pool cover

Guide price: From £321,949 (inc VAT)*



Olympic A Dimensions





Olympic B Specifications

The **Olympic model B** is one of our most popular indoor pools. This fully insulated building structure is finished in an engineered timber exterior. Designed and built to the highest standards this 11.5m long by 5.5m wide building houses a 9m by 3.5m heated mosaic tiled pool. The changing area floor is tiled throughout with a wet room style shower with a glazed screen, seating bench and a separate W.C with hand basin. The internal finishes are light, contemporary and airy consisting of painted plaster walls, tiled floors and a choice of natural or white wash timber roof design. The exterior can be finished in a wide range of colours or optional brick or painted render can be added. The glazed lantern and aluminium bi-fold doors make this a warm and welcoming environment even during the cold winter months.

This indoor pool comes fully equipped with all the associated plant, filtration, heating, circulation equipment, dehumidification system, including an automatic deck mounted slatted pool cover in white.

"Throwing open the doors to swim in the spring and early summer is an absolute delight"
Mr D.J. Beaconsfield.

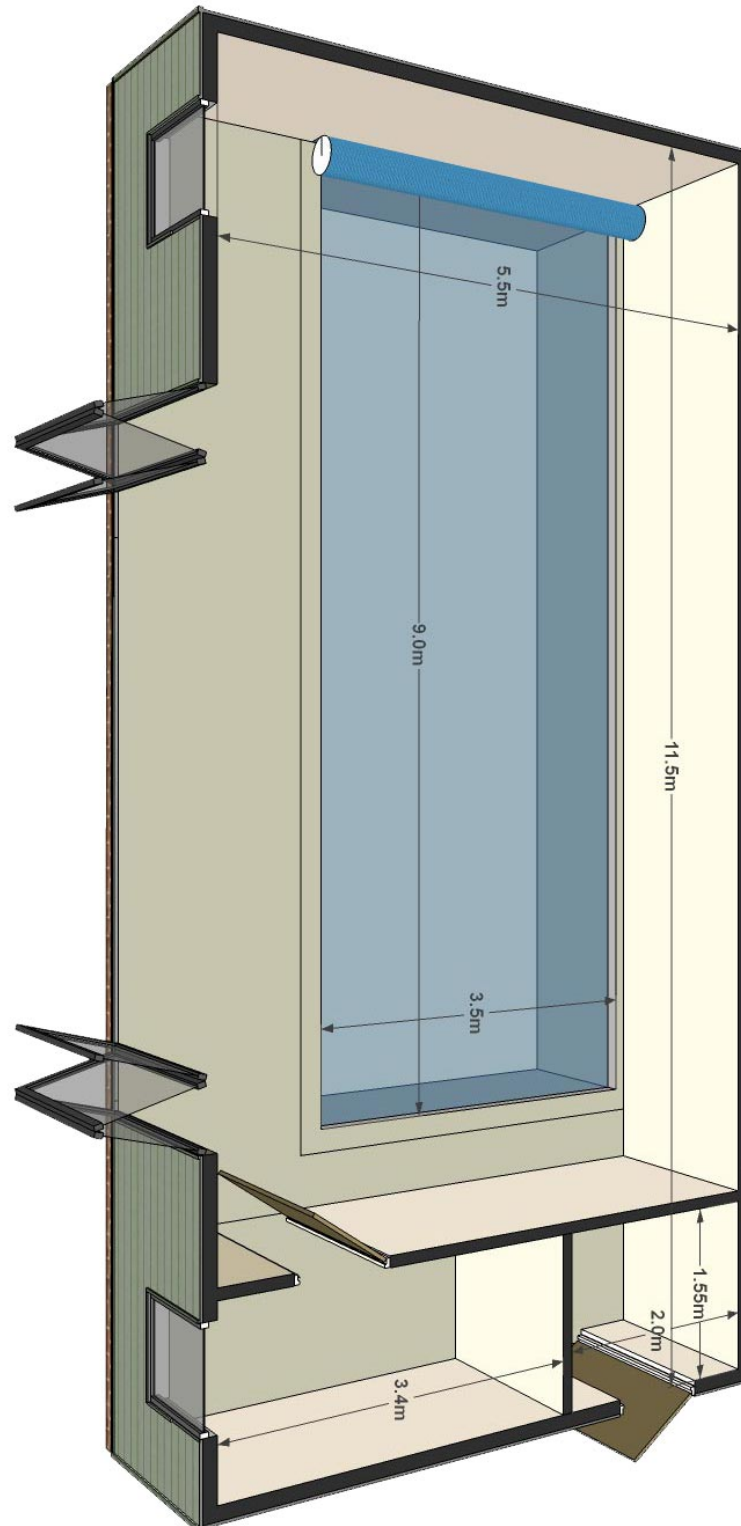
POOL FEATURES

- Heated pool with mosaic tile finish
- Changing room
- Wet room tiled shower with glazed screen
- Separate WC
- Internal plant room
- Air dehumidification unit
- Pool side relaxation space
- Contemporary light and airy interior design with tiled floors and white walls
- Natural timber roof design with feature roof lantern
- Choice of modern external colours
- State of the art filtration and circulation equipment
- Sustainable construction
- Bifold doors in Aluminium
- Automatic deck mounted slatted pool cover

Guide price: From £383,668 (inc VAT)*



Olympic B Dimensions





Olympic C Specification

The Olympic model C a much-loved choice for the health conscious and sporty. This fully insulated building structure is finished in an engineered timber exterior. Designed and built to the highest standards this 13m long by 6m wide building houses a 10.5m by 4m heated mosaic tiled pool. The large pool surround provides ample room for seating making it the ideal place to entertain, unwind or relax after a workout. The changing area floor is tiled throughout with a wet room style shower with a glazed screen, seating bench and a separate W.C with hand basin. A sauna or gym with glazing overlooking the pool can be added to provide something for all the family. The internal finishes are light, contemporary and airy consisting of painted plaster walls, tiled floors and a choice of natural or white wash timber roof design. The exterior can be finished in a wide range of colours or optional brick or painted render can be added. The glazed lantern and aluminium bi-fold doors make this a warm and welcoming environment even during the cold winter months. This indoor pool comes fully equipped with all the associated plant, filtration, heating, circulation equipment, associated dehumidification system and including an automatic deck mounted slatted pool cover in white.

POOL FEATURES

- Heated pool with mosaic tile finish
- Changing room
- Wet room tiled shower with glazed screen
- Separate WC
- Internal plant room
- Air dehumidification unit
- Pool side relaxation space
- Contemporary light and airy interior design with tiled floors and white walls
- Natural timber roof design with feature roof lantern
- Choice of modern external colours
- State of the art filtration and circulation equipment
- Sustainable construction
- Bifold doors in Aluminium
- Automatic deck mounted slatted pool cover

Guide price: From £452,260 (inc VAT)*





Olympic D Specifications

Our **Olympic model D** is a truly desirable indoor pool. This fully insulated building structure is finished in an engineered timber exterior. Designed and built to the highest standards this 15m long by 7m wide building houses a 12m by 4.5m heated mosaic tiled pool. The large pool surround provides ample room for seating making it the ideal place to entertain, unwind or relax after a workout. The changing area floor is tiled throughout with a wet room style shower with a glazed screen, seating bench and a separate W.C with hand basin. A sauna or gym with glazing overlooking the pool can be added to provide something for all the family. The internal finishes are light, contemporary and airy consisting of painted plaster walls, tiled floors and a choice of natural or white wash timber roof design. The exterior can be finished in a wide range of colours or optional brick or painted render can be added. The glazed lantern and aluminium bi-fold doors make this a warm and welcoming environment even during the cold winter months.

This indoor pool comes fully equipped with all the associated plant, filtration, heating, circulation equipment, including an automatic deck mounted slatted pool cover in white.

POOL FEATURES

- Heated pool with mosaic tile finish
- Changing room
- Wet room tiled shower with glazed screen
- Separate WC
- Internal plant room
- Air dehumidification unit
- Pool side relaxation space
- Contemporary light and airy interior design with tiled floors and white walls
- Natural timber roof design with feature roof lantern
- Choice of modern external colours
- State of the art filtration and circulation equipment
- Sustainable construction
- Bifold doors
- Automatic deck mounted slatted pool cover

Guide price: From £530,964 (inc VAT)*

