



Barn



A swimming pool building with all the charm of a country barn conversion. You can choose the colouring and texture to suit your surroundings – which makes the indoor pool Barn a more suitable design choice for rural areas or to satisfy local planning authorities.

As with other Origin designs, there is a wide choice of options to choose from to ensure your private swimming pool is finished and styled to your specification.

This beautiful indoor swimming pool can be designed exclusively to your needs.

- Designed to meet Permitted Development criteria
- More energy efficient – through improved levels of insulation
- A selection of green energy options- to further reduce energy consumption and protect the environment
- Configurable door and window layouts
- Choice of roof finishes: slate, clay tile or shingle.
- Choices in exterior finish: brick, painted render, horizontal weatherboard, cedar or engineered timber.
- Configurable extension modules – looking for a little more space to entertain, train or relax
- Wellbeing options including: spa, sauna, steam room, relaxation area, gym or bar.



Barn A Specification

The **Barn model A** is a charming indoor pool barn suitable for a garden of any size. This fully insulated building structure is finished in a horizontal timber weatherboard exterior that can be stained or painted in a wide range of colours to suit even the most adventurous palate. Designed and built to the highest standards this 9.5m long by 5m wide barn houses a 7.5m by 3m heated mosaic tiled pool and the 4.3m by 1.5m porch extension is ideal for summer barbecues or admiring the garden on a frosty morning from the warmth of the cosy pool house. The internal finishes are light, contemporary and airy consisting of painted plaster walls, tiled floors and a choice of natural or white wash timber roof design. The exterior can be further personalised to include brick plinth detailing or a maintenance free cement based timber appearance weatherboard. The changing area floor is tiled throughout with a wet room style shower with a glazed screen, seating bench and a separate W.C with hand basin.

This indoor pool comes fully equipped with all the associated plant, filtration, heating and circulation equipment, dehumidification system and including an automatic deck mounted slatted pool cover in white.

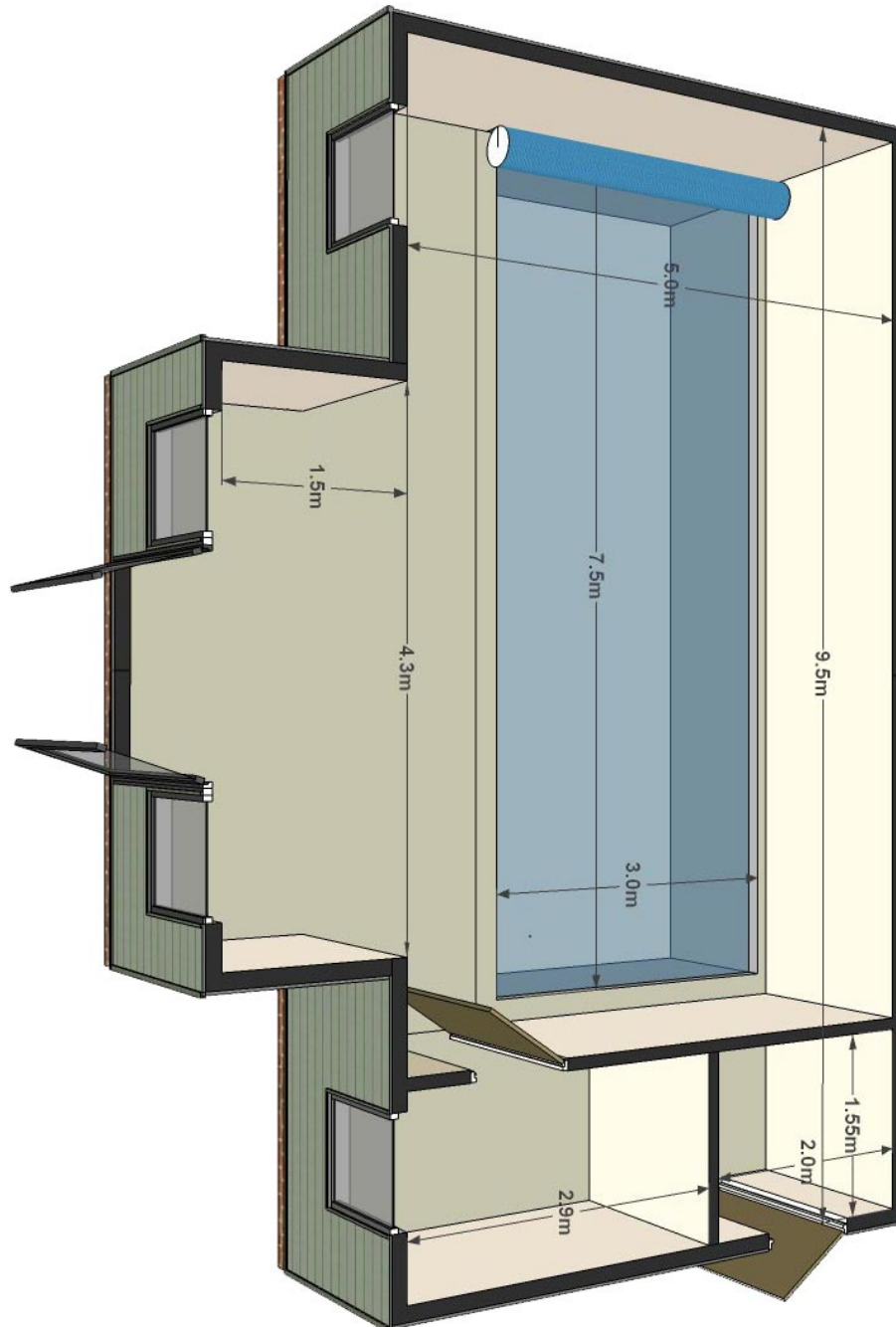
POOL FEATURES

- Heated pool with mosaic tile finish
- Changing room
- Wet room tiled shower with glazed screen
- Separate WC
- Internal plant room
- Air dehumidification unit
- Pool side relaxation space and porch area
- Contemporary light and airy interior design with tiled floors and white walls
- Natural timber roof design
- Choice of external colours
- State of the art filtration and circulation equipment
- Sustainable construction
- Automatic deck mounted slatted pool cover

Guide price: From £323,716 (inc VAT)*



Barn A Dimensions





Barn B Specification

The **Barn model B** is a delightful indoor pool suitable for a garden of any size.

This fully insulated building structure is finished in a horizontal timber weatherboard exterior that can be stained or painted in a wide range of colours to suit even the most adventurous palate. Designed and built to the highest standards this 11.5m by 5.5m barn houses a 9m by 3.5m heated mosaic tiled pool and the 4.3m by 1.5m porch extension is ideal for summer barbecues, parties or a warm and cosy winter retreat for all the family. The internal finishes are light, contemporary and airy consisting of painted plaster walls, tiled floors and a choice of natural or white wash timber roof design. The exterior can be further personalised to include brick plinth detailing or a maintenance free cement based timber appearance weatherboard. The changing area floor is tiled throughout with a wet room style shower with a glazed screen and seating bench and a separate W.C with hand basin.

This indoor pool comes fully equipped with all the associated plant, filtration, heating and circulation equipment, dehumidification system and including an automatic deck mounted slatted pool cover in white.

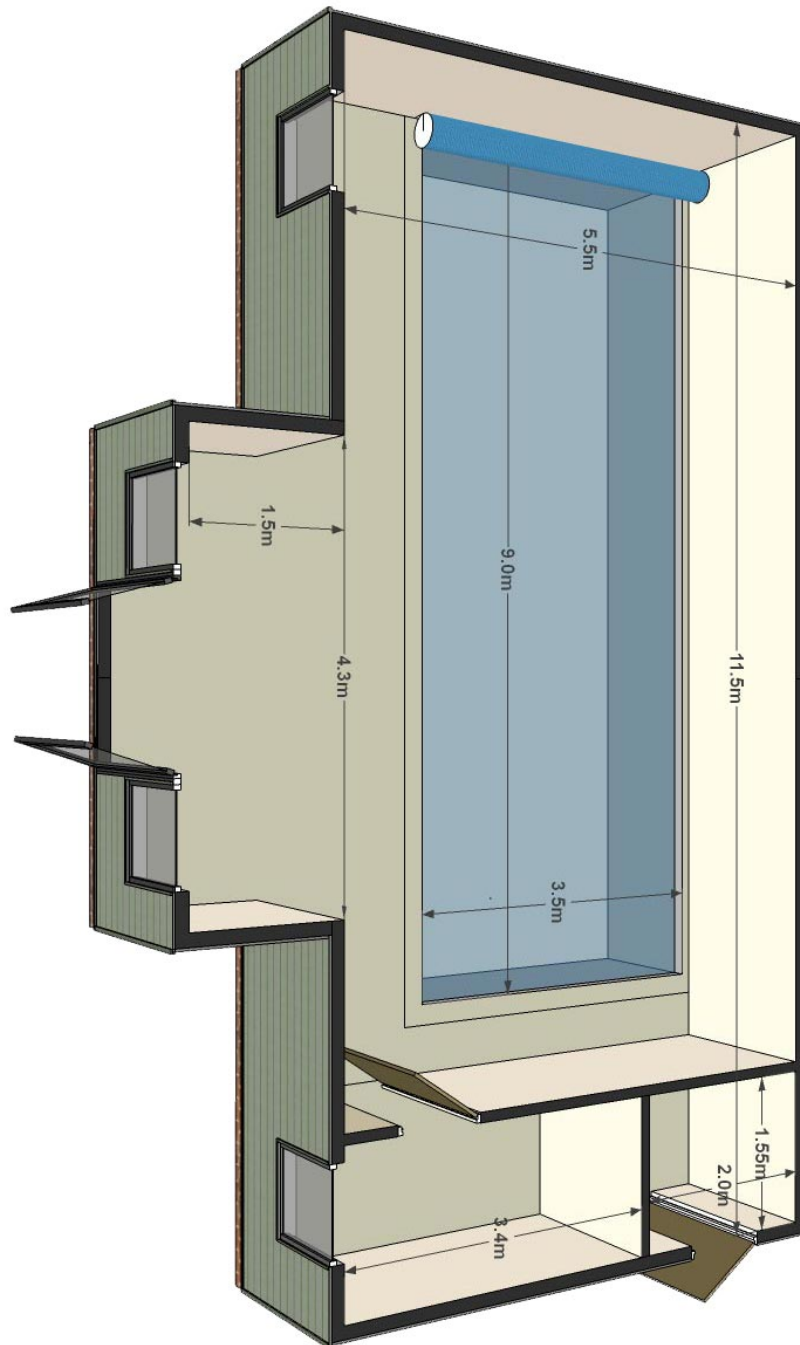
POOL FEATURES

- Heated pool with mosaic tile finish
- Changing room
- Wet room tiled shower with glazed screen
- Separate WC
- Internal plant room
- Air dehumidification unit
- Pool side relaxation space and porch area
- Contemporary light and airy interior design with tiled floors and white walls
- Natural timber roof design
- Choice of external colours
- State of the art filtration and circulation equipment
- Sustainable construction
- Automatic deck mounted slatted pool cover

Guide price: From £377,680 (inc VAT)*



Barn B Dimensions





Barn C Specification

The **Barn model C** is a large pool barn with an ample poolside relaxation area and a generous porch extension. This fully insulated building structure is finished in a horizontal timber weatherboard exterior that can be stained or painted in a wide range of colours to suit even the most adventurous palate. Designed and built to the highest standards this 13m by 6m barn houses a 10.5m by 4m heated mosaic tiled pool and the 4.3m by 1.5m porch extension is ideal for family gatherings, parties or a warm and cosy family retreat during the colder winter months. The internal finishes are light, contemporary and airy consisting of painted plaster walls, tiled floors and a choice of natural or white wash timber roof design. The exterior can be further personalised to include brick plinth detailing or a maintenance free cement based timber appearance weatherboard. The changing area floor is tiled throughout with a wet room style shower with a glazed screen, seating bench and a separate W.C with hand basin.

This indoor pool comes fully equipped with all the associated plant, filtration, heating and circulation equipment, dehumidification system and including an automatic deck mounted slatted pool cover in white.

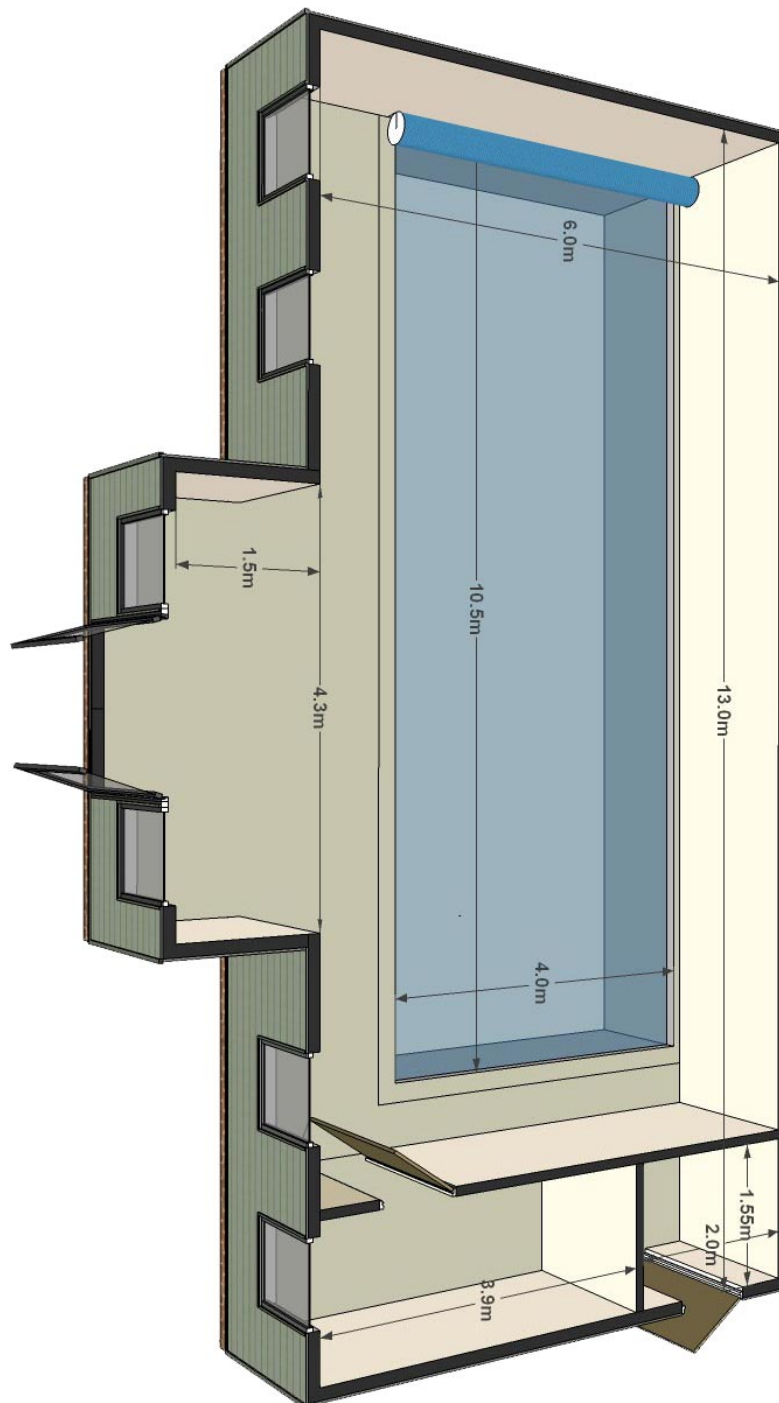
POOL FEATURES

- Heated pool with mosaic tile finish
- Changing room
- Wet room tiled shower with glazed screen
- Separate WC
- Internal plant room
- Air dehumidification unit
- Pool side relaxation space and porch area
- Contemporary light and airy interior design with tiled floors and white walls
- Natural timber roof design
- Choice of external colours
- State of the art filtration and circulation equipment
- Sustainable construction
- Automatic deck mounted slatted pool cover

Guide price: From £443,424 (inc VAT)*



Barn C Dimension





Barn D Specification

The **Barn model D** is the largest in the range. This fully insulated building structure is finished in a horizontal timber weatherboard exterior that can be stained or painted in a wide range of colours to suit even the most adventurous palate. Designed and built to the highest standards this 15m by 7m barn houses a 12m by 4.5m heated mosaic tiled pool and the 4.3m by 1.5m porch extension is ideal for family gatherings, parties or a warm and cosy family retreat during the colder winter months. The internal finishes are light, contemporary and airy consisting of painted plaster walls, tiled floors and a choice of natural or white wash timber roof design. The exterior can be further personalised to include brick plinth detailing or a maintenance free cement based timber appearance weatherboard. The changing area floor is tiled throughout with a wet room style shower with a glazed screen, seating bench and a separate W.C with hand basin.

This indoor pool comes fully equipped with all the associated plant, filtration, heating, circulation equipment, dehumidification system and including an automatic deck mounted slatted pool cover in white.

POOL FEATURES

- Heated pool with mosaic tile finish
- Changing room
- Wet room tiled shower with glazed screen
- Separate WC
- Internal plant room
- Air dehumidification unit
- Pool side relaxation space and porch area
- Contemporary light and airy interior design with tiled floors and white walls
- Natural timber roof design
- Choice of external colours
- State of the art filtration and circulation equipment
- Sustainable construction
- Automatic deck mounted slatted pool cover

Guide price: From £542,253 (inc VAT)*



Barn D Dimensions

